

OTTAWA

Canada|Ontario-Quebec|Ottawa|Ottawa City

Where Sound Sounds Best

Avalon **CLOSED**

AKA: Glebe
740 Bank
November 17th, 1928-July 1947
The Avalon had 876 seats.
Renamed Glebe August 22, 1947-October 17th, 1956



Bennets **CLOSED**

AKA: Dominion
December 10th, 1906-March 15th, 1910

Bijou **CLOSED**

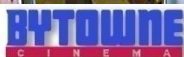
Fleet and Broad
1909-1914

Broadway **CLOSED**

Albert and O'Connor

Bytowne **OPEN**

AKA: Nelson
325 Rideau <http://www.bytowne.ca/>
Renamed from Nelson in 1988 as it was taken over by Bruce White and Jean Cloutier. In 1999 the seats from Capitol Square Cinemas were installed.



Capitol **CLOSED**

AKA: Loew's
230 Queen at Bank
September 1924-1970
Famous Players since owned the Capitol which had 2,528 seats, the biggest ever for an Ottawa theatre. The Who (Bootleg recording on October 15th, 1969 is around), Jimi Hendrix, Elvis Presley performed on its stage. In 1964 there was plans to split it into 2 screens but never happened.



Capitol **CLOSED**

AKA: Casino, Majestic
1925-1928
592 Little Sussex St.
* 1909 opened as Casino
* 1925 renamed Majestic
* November 1928 renamed Capitol

Capitol **CLOSED**

AKA: Family, Capitol, Galvin, Embassy
204 Queen
* October 24th, 1910 opened as Family, an live theatre.
* September 3rd, 1923 renamed Franklin
* 1925 renamed Capitol
* 1926 closed
* 1927 reopened as Galvin as an stage theatre.
* 1929 renamed Embassy,
* 1932 All the Ottawa newspaper refused ads for this theatre. It closed shortly after.

Capitol Square 3 **CLOSED**

230 Queen
Opened June 1st, 1972 and closed August 12th, 1999 Famous Players owned this theatre.
Seating: 499, 316, 136 Total: 951 seats



Refined Vaudeville and Photo Plays

Casino **CLOSED**

AKA: Majestic, Capitol
1909-1925
* 1909 opened as Casino
* 1925 renamed Majestic
* November 1928 renamed Capitol

Where Perfect Sound is Always Found

Centre **CLOSED**

AKA: Mall

116 Sparks

October 14th, 1915-1968

1,400 seats in 1915

Centre Amusements owned the Centre, which had 998 seats. It had no stairs to reach the upper seats, just ramps. During the second World War, an royal box was set up for Queen Juliana of the Netherlands, which was occupied by Nazi Germany. In June 1968 the theatre was renamed Mall and shown adult movies.



Century **CLOSED**

AKA: Victoria, Towne

Wellington and Holland

1948-1954

- * December 1, 1934 opened as Victoria
- * 1939 Donat Paquin, who owns Français and Laurier in Hull buys it
- * November 18th, 1948 renamed Century as 20th Century Theatres takes it over.
- * 1954 renamed Towne
- * November 1955 closed



Cinema **CLOSED**

AKA: Veteran, Columbia, Nola

1045 Wellington

- * 1914 opened as Cinema.
- * 1920 renamed Veteran
- * April 1923 renamed Columbia
- * March 1938 renamed Nola
- * 1941 taken over by Odeon
- * September 30th, 1948 closed

Clarey **CLOSED**

AKA: Fern, Rialto, Phoenix

413 Bank

1914-1919

- * 1914 opened as Clarey
- * 1919 renamed Fern
- * 1932 renamed Rialto
- * 1970's an grindhouse theatre that tried to compete with the sleazier fare across the river.
- * 1979 closed
- * September 17th, 1980 reopened as Phoenix
- * April 2nd, 1982 taken over by Cineplex
- * 1984, became part of Cineplex Odeon
- * June 22nd, 1991 closed

Columbia **CLOSED**

1045 Wellington W.

1923-1938

This theatre had 648 seats. See cinema for more details.

Cozy **CLOSED**

1920-1926

Dominion **CLOSED**

AKA: Bennett

March 15th, 1910 and burned down on

October 20th, 1921

Eastview **CLOSED**

150 Montreal Rd.

December 21st, 1946-1958



Elgin **CLOSED**

216 Elgin

Opened 1937, 2nd Theatre "Little Elgin" opened 1947 and closed 1994 This is the first twin movie theatre in Canada. 20th Century and in later years Famous Players owned the Elgin.

Seating:
Elgin 1211
Little Elgin 410
Total 1621



Ottawa City Archives, CA 18926. "Fire at the Little Elgin." 1975.



1989 photo by Peter Butler.



Elmdale **CLOSED**

1196 Wellington

September 9th, 1947 twinned (bowling-alley style) October 23rd, 1981 and closed August 25th, 1994 Odeon/Cineplex Odeon owned this theatre. It is now a church.

Seating:
Cinema 1 376
Cinema 2 257
Total 633 seats



Empire **CLOSED**

Bank St.

Empire 7 OPEN

AKA: World Exchange Plaza 7
111 Albert St. 3rd Floor
September 30, 2005-

Seating 1994- 312, 387, 197, 127, 106, 93, 89, Total 1,311 seats



Fairyland CLOSED

Bank and Slater

Family CLOSED

AKA: Franklin, Capitol, Galvin, Embassy
204 Queen

- * October 24th, 1910 opened as Family, a live theatre.
- * September 3rd, 1923 renamed Franklin
- * 1925 renamed Capitol
- * 1926 closed
- * 1927 reopened as Galvin as a stage theatre.
- * 1929 renamed Embassy,
- * 1932 All the Ottawa newspaper refused ads for this theatre. It closed shortly after.



Fern CLOSED

AKA: Clarey, Rialto, Phoenix
413 Bank

- 1919-1932
- * 1914 opened as Clarey
- * 1919 renamed Fern
- * 1932 renamed Rialto
- * 1970's an grindhouse theatre that tried to compete with the sleazier fare across the river.
- * 1979 closed
- * September 17th, 1980 reopened as Phoenix
- * April 2nd, 1982 taken over by Cineplex
- * 1984 became part of Cineplex Odeon
- * June 22nd, 1991 closed

Flower CLOSED

AKA: Strand

128 Sparks St.
September 12th, 1914-1918

This theatre was built by N. L. Nathanson. It had an retractable roof. On September 18th, 1918 Paramount Theatres buys it and renames it Strand. It closed March 5th, 1921.

Français CLOSED

Dalhousie and Rideau

June 23rd, 1913-1961

R. E. Maynard owned the Français, which had 999 seats. It was very popular with the kids during Saturday afternoon performances, which called the theatre "Frog".



Franklin CLOSED

AKA: Family, Capitol, Galvin, Embassy
204 Queen

- * October 24th, 1910 opened as Family, a live theatre.
- * September 3rd, 1923 renamed Franklin
- * 1925 renamed Capitol
- * 1926 closed
- * 1927 reopened as Galvin as a stage theatre.
- * 1929 renamed Embassy,
- * 1932 All the Ottawa newspaper refused ads for this theatre. It closed shortly after.

Gaiety CLOSED

Wellington St.
1910-?

Glebe CLOSED

AKA: Avalon

740 Bank

Opened August 22nd, 1947–October 17th, 1956 Odeon owned the Glebe, which had 858 seats.



Grand CLOSED

?
Opened about 1909 and closed about 1910

Imperial CLOSED

325 Bank at Gilmour
August 24th, 1914-October 15th, 1955
20th Century Theatres owned the Imperial, which had 999 seats.
In the early 1970's it housed the Pandora's Box strip club. It is now the Barrymore's club.

Linden CLOSED

AKA: Towne, New Edinburgh

5 Beechwood

1949-1968

- * August 25th, 1947 opened by Casey Swedlove as Linden with 588 seats.
- * July 1968 taken over by 20th Century and renamed Towne
- * 1973 sold to Germain Cadieux and tried to switched to French movies, but the Montréal suppliers refused to book them and swiched into an repertory policy.
- * 1980 theatre sold out most night as the projectionist strike occoured.
- * 1983 sold to Jean Cloutier and Bruce White
- * May 1989 renamed New Edinburgh
- * August 1989 closed



Little Theatre CLOSED

400 King Edward Av.

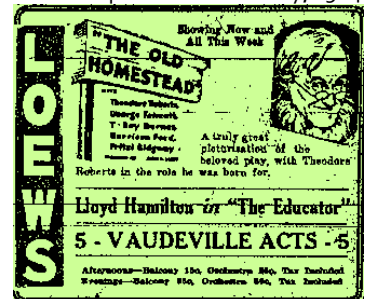
January 4th, 1928 -1970 This theatre was owned by Ottawa Drama Inc. and had 498 seats. An new live theatre opened on the site in 1972

Loew's CLOSED

AKA: Keith's Capitol, Capitol

90 Bank

Opened November 8th, 1920 and renamed Keith's Capitol on Labour Day, 1924.



Mall **CLOSED**

AKA: Centre

116 Sparks

Opened July 11, 1968 and closed October 2nd, 1973 The Mall was owned by Odeon and shown exploitation and adult movies. It closed when it could not compete with the Quebec adult cinemas.

MEET THE NEWEST MEMBER OF THE ODEON FAMILY OF FINE THEATRES

The Mall

EVERYTHING NEW... EXCEPT THE LOCATION!

- NEW - name
- NEW - management
- NEW - theatre front
- NEW - lobby and foyer
- NEW - seats
- NEW - screens
- NEW - decor

OPENING PROGRAM
CANADIAN PREMIERE
IF YOU'RE THIRTY, YOU'RE THROUGH!
WILD IN THE STREETS
TECHNICOLOR

116 SPARKS ST., PHONE 233-7771

The policy of the Odeon Mall Theatre will be to present hard-hitting, contemporary films in single or double feature programmes of outstanding entertainment value.

HELL ARE A FEW OF THE PROGRAMS TO BE PREVIEWED BY THE MERRY BRIGADE.
STRANGERS IN TOWN
THE MONEY JUNGLE
THE BIGGEST BONDAGE OF THEM ALL
THE VIOLENT ONES
THE SAVAGE SIX
THE VENGEANCE OF SHE

VISIT THE "NEW" ODEON MALL SOON! (ON OTTAWA'S FAMOUS MALL)



Mayfair **OPEN**

Bank and Sunnyside

Opened December 5th, 1932

The Robertson estate owned the Mayfair, which had 639 seats.



MAYFAIR
BANK AND SUNNYSIDE

Opens Tonight

For the next three days
our gala screen

**the MUSICAL
DRAMATIC
SPECTACULAR**
Screen Sensation

**THE
BLUE
DANUBE**

Will be shown
Additional Features

Mat. 8:15 p.m.
Evening 7:30 p.m.
Children 5:00 p.m.
Admission 10c

Evenings 1 and 2
Admission 15c



Nelson

AKA: Bytowne

325 Rideau

Opened Feb 10, 1947 and renamed Bytowne in 1988 20th Century Theatres owned the Nelson, which had 997 seats.

TODAY and SATURDAY

TRASHY SQUEAKIN' HIT OF THE SEASON!
ORIGINAL
**BARBARA
STANWYCK-MORGAN**

**CHRISTMAS IN
CONNECTICUT**
SYDNEY GREENSTREET

ALSO LAUNCHED BY
**CARSON
LAME WYMAN**
HELE WANNING
ALAN HALE
GRACE THOMAS

**Make Your
Own Bed**

NELSON
REGULAR
DRESS

New Edinburgh **CLOSED**

AKA: Towne, Linden

5 Beechwood

1989

* May 1989 renamed New Edinburgh

* August 1989 closed

See Linden for more details

Nickel **CLOSED**

Sparks and O'Connor

Nickelodeon **CLOSED**

Bank and Albert

1907-?

Nola **CLOSED**

1045 Wellington

1914-1948

The Nola had 620 seats.

Odeon **CLOSED**

142 Bank

May 21st, 1949-October 24th, 1958

Odeon owned this theatre, which had 1,539 seats. A gas explosion happened on October 25th, 1958 killing 2 destroying the theatre. As many as 600 could be killed had this been a working day.

TODAY at 12 NOON

**Official Opening
OF THE LUXURIOUS NEW
ODEON THEATRE**

CONTINUOUS POLICY
Presenting

The greatest production that has won the applause of millions of movie-goers... read what in the U.S.A. at \$2.00 prices... shown here under the regular policy of smaller prices.

**A BRIGHT NEW STAR
IN THE MOVIE SKY**
SHEARER
with a feature program

THE RED SHOES
TECHNICOLOR

Bookings at Our Lounge

TEA LOUNGE

ODEON

Orpheum **CLOSED**

Somerset and Preston

1909-1916

People's **CLOSED**

Wellington St.

Nickelodeon era theatre

Phoenix **CLOSED**

AKA: Clarey, Rialto, Phoenix

413 Bank

1919-1932

* 1914 opened as Clarey

* 1919 renamed Fern

* 1932 renamed Rialto

* 1970's an grindhouse theatre that tried to compete with the sleazier fare across the river.

* 1979 closed

* September 17th, 1980 reopened as

Phoenix

* April 2nd, 1982 taken over by Cineplex

* 1984 became part of Cineplex Odeon

* June 22nd, 1991 closed

**GREAT
EXPLOITATIONS**
\$7.50 Continuous from 1:00 pm
Separate admission for evenings

JANUARY 4, 5 & 6
**Desires Within
Young Girls**
NEW! **EMANUELLE,
QUEEN OF SADOS**

PHOENIX
CLAREY

St. George **CLOSED**

Bank and MacLaren
1909-1919

Somerset **CLOSED**

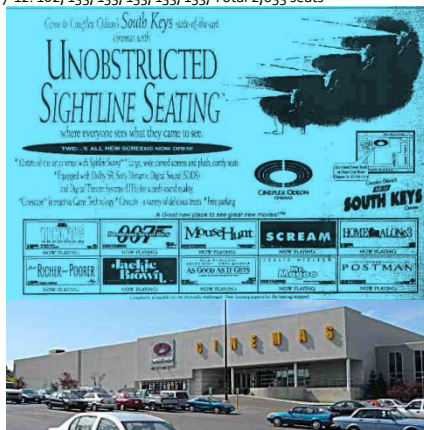
Somerset and Bank
Opened December 31st, 1937 and closed 2000 to make way for a supermarket Odeon and in later years Cineplex Odeon owned the Somerset, which had 729 seats.



South Keys **OPEN**

2214 Bank
Opened Dec 1997 This is the first theatre in the Ottawa with Stadium seating; This is the only multiplex cinema in Canada that show movies from 10 AM every day. Cineplex Odeon owns this theatre

Seating:
1-6: 312, 312, 107, 107, 134, 234
7-12: 162, 133, 133, 133, 133, 133, Total 2,033 seats

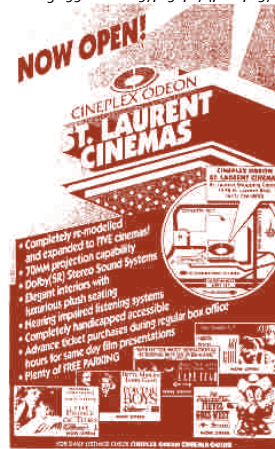


St Laurent Shopping Centre

CLOSED

- * October 4th, 1967 opened as a twin by Odeon
- * 1977 taken over by Canadian Odeon
- * 1984 taken over by Cineplex Odeon
- * 1991 5 cinemas
- * 1998 became an discount cinema
- * February 15th, 2001 closed
- * 2005 Rainbow Cinemas opened another theatre in the same mall.

Seating 1968-1991
Cinema 1 770
Cinema 2 270
Total 1040 seats
Seating 1991-2001 297, 152, 174, 181, 197 Total 1001 seats



Today is Thursday!
Our Treat Today!
Celebrate with us at the
ST. LAURENT SHOPPING MALL



Star **CLOSED**

Somerset and Bell
1910-1914

Strand **CLOSED**

AKA: Flower
128 Sparks St.
September 12th, 1914-1918
This theatre was built by N. L. Nathanson. It had an retractable roof. On September 18th, 1918 Paramount Theatres buys it and renames it Strand. It closed March 5th, 1921.

Strand **CLOSED**

1265 Bank
Opened May 19th, 1950 and closed October 29th, 1954
W. Farran owned the Strand, which had 553 seats. The theatre has been demolished in 2002 for a Tim Horton's.



Sterling **CLOSED**

Wellington St. W
1909-1916

Towne **CLOSED**

1257 Wellington
* December 1, 1934 opened as Victoria
* 1939 Donat Paquin, who owns Français and Laurier in Hull buys it
* November 18th, 1948 renamed Century as 20th Century Theatres takes it over.
* 1954 renamed Towne
* November 1955 closed

Towne **CLOSED**

AKA: Linden, New Edinburgh

5 Beechwood

1949-1968

* August 25th, 1947 opened by Casey Swedlove as Linden with 588 seats.

* July 1968 taken over by 20th Century and renamed Towne

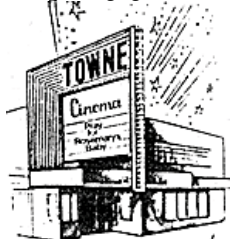
* 1973 sold to Germain Cadieux and tried to switch to French movies, but the Montréal suppliers refused to book them and switched into a repertory policy.

* 1980 theatre sold out most night as the projectionist strike occurred.

* 1983 sold to Jean Cloutier and Bruce White

* May 1989 renamed New Edinburgh

* August 1989 closed



Unique **CLOSED**

55 Rideau (Chapter's bookshop)

1906-?

Vanier **CLOSED**

150 Montreal Road

Opened 1980 and closed 2000 Cineplex and in later years Cineplex Odeon owned the Vanier; it sometimes shown French movies.

Seating: 118, 124, 108, 108, 127, 119, 261 Total 965 seats



Veteran **CLOSED**

AKA: Cinema, Columbia, Nola

1045 Wellington

* 1914 opened as Cinema.

* 1920 renamed Veteran

* April 1923 renamed Columbia

* March 1938 renamed Nola

* 1941 taken over by Odeon

* September 30th, 1948 closed

Victoria **CLOSED**

AKA: Century, Towne

1257 Wellington

1934-1948

580 seats

* December 1, 1934 opened as Victoria

* 1939 Donat Paquin, who owns Français and Laurier in Hull buys it

* November 18th, 1948 renamed Century as 20th Century Theatres takes it over.

* 1954 renamed Towne

* November 1955 closed



Wembly **CLOSED**

?

Opened 1928 and closed 1929

Westboro **CLOSED**

381 Richmond

494 seats

July 14th, 1941-1955



Westgate **CLOSED**

1309 Carling

November 14th, 1980-2000

Odeon and in later years Cineplex Odeon owned the Westgate cinemas.

Seating:

Cinema 1 500 seats

Cinema 2 330 seats

Cinema 3 175 seats

Total 1005 seats



World Exchange Plaza

AKA: Empire 7

111 Albert St. 3rd Floor

Opened 1991 Expanded 1994 Cineplex

Odeon owns this theatre

Sold to Empire Theatres and renamed

Empire 7 on September 30, 2005

Seating 1994- 312, 387, 197, 127, 106, 93, 89, Total 1311 seats



Wonderland **CLOSED**

Rideau St, next door to the Unique

April 6th, 1907-?

75 Listings

Feb 26, 2005

Updated 2007-12-01