

HAMILTON

Canada|Ontario|Hamilton|Hamilton City

HAMILTON DIVISION HAMILTON

Avalon **CLOSED**

197 Ottawa

Opened about 1945 and closed about 1965 United Amusements (FP) owned the Avalon, which had 762 seats.



Avon **CLOSED**

195 Ottawa

Opened about 1969 and closed 1987 Supreme Theatres and in about 1980 Famous Players owned the Avon, which had 663 seats.

Broadway **CLOSED**

AKA: Pussycat, International Cinema

251 King William

Renamed from Pussycat about 1979 and closed about 1990 Summer Sun Limited owned the Broadway, which had 437 seats.



Capitol **CLOSED**

AKA: Loew's

103 King St. E.

Renamed from Loew's 1922, closed 1971 and demolished Jan 10, 1973 Famous Players owned it 1930-1946 and Odeon 1946-1971 owned the Capitol, which had 2259 seats, the biggest in Hamilton at the time,



Centre Mall 8 **CLOSED**

1145 Barton

Opened about 1989 and closed 2001 Cineplex Odeon owns this theatre.

Seating:

Cinema 1 174 seats

Cinema 2 217 seats

Cinema 3 305 seats

Cinema 4 113 seats

Cinema 5 126 seats

Cinema 6 116 seats

Cinema 7 695 seats

Cinema 8 581 seats

Total 2327 seats



Centre Twin **CLOSED**

1145 Barton

Opened about 1969 and closed about 1985

NGC and in 1975 Canadian Theatres and in 1979 Canadian Odeon and in 1985 Cineplex Odeon owned the Centre Twin.

Seating:

East 615 seats

West 742 seats (70mm)

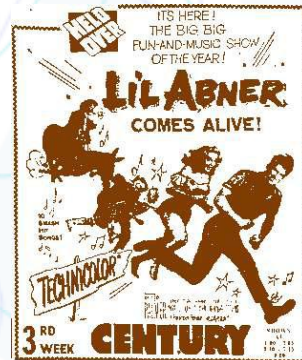
Total 1357 seats



Century **CLOSED**

12 Mary

Opened about 1945 and closed 1988 20th Century and in about 1980 Famous Players owned the Century, which had 858 seats.



Cinema **CLOSED**

1355 Main East

Opened about 1959, twinned about 1975 and closed 1983 20th Century Theatres owned the Cinema, which had 588 seats.



Cinema Italia

Opened about 1964 and closed about 1965 A. Ancelozzi and E. Mascia owned the Cinema Italia, which had 770 seats and shown Italian movies.

Colonial **CLOSED**

aka: Wonderland, Princess, Tivoli
1909-1913

Community **CLOSED**

1355 Main East
Opened about 1940 and closed about 1955 Supreme Theatres owned the Community.



Delta **CLOSED**

1087 Main East
Opened about 1935 and closed about 1980 McKean Theatres and in about 1970 Global Pictures owned the Delta, which had 972 seats.



Downtown **CLOSED**

?

Opened about 1955 and closed about 1960 20th Century Theatres owned the Downtown, which had 853 seats.

Empire **CLOSED**

424 Barton
Opened about 1935 and closed about 1955 McKean Theatres owned the Empire, which had 892 seats.

Granada **CLOSED**

102 James
Opened about 1940 and closed about 1955 Famous Players owned the Granada, which had 1017 seats.



Gregory **CLOSED**

Main and Kenilworth
Opened about 1935 and closed about 1940 The Gregory had 481 seats.



Hamilton Drive-In

Upper James
Opened about 1949 and closed about 1985 Dydzak Drive-In Theatres Ltd. owned this drive-in, which had space for 900 cars.



Hyland **CLOSED**

190 King East
Opened about 1959 and closed about 1985 Odeon owned the Hyland, which had 977 seats.

International Cinema **CLOSED**

AKA: Broadway, Pussycat
251 King William
Opened about 1969 and renamed Pussycat about 1970 Joe Dydzak Jr. owned the International Cinema, which had 450 seats.

Jackson Square **OPEN**

James and King Opened 1973 and expanded to 6 cinemas 1989, this is the only theatre left in Downtown Hamilton.

Owners:
1973 Famous Players
2005 (June) Cineplex Galaxy
2005 (Sept 30) Empire Theatres

Seating:
Cinema 1 691 seats
Cinema 2 424 seats
Total 1115 seats
Seating 1989-
Cinema 1 507 seats
Cinema 2 376 seats
Cinema 3 282 seats
Cinema 4 282 seats
Cinema 5 218 seats
Cinema 6 202 seats
Total 1867 seats



Kenilworth **CLOSED**

241 Kenilworth Opened about 1935 and closed about 1960 United Amusements (FP) owned the Kenilworth, which had 693 seats.

Kenmore **CLOSED**

434 King East
Opened about 1935 and closed about 1960 United Amusements (FP) owned the Kenilworth, which had 647 seats.

Lime Ridge 4 **CLOSED**

999 Upper Wentworth
Opened 1981 and closed 2001 Famous Players owns this theatre.

Seating:
Cinema 1 364 seats
Cinema 2 224 seats
Cinema 3 212 seats
Cinema 4 200 seats
Total 1000 seats

Loew's **CLOSED**

AKA: Capitol
103 King East Opened 1917 renamed Capitol 1922 The Loew's had 2259 seats

Lyceum **CLOSED**

326 Concession
Opened about 1935 and closed about 1940 The Lyceum had 675 seats.

Lyric **CLOSED**

?
Opened about 1935 and closed about 1940 The Lyric had 722 seats.

Main **CLOSED**

?

Opened about 1935 and closed about 1935 The Main had 685 seats.



Main West 2 **CLOSED**

1605 Main

Opened about 1984 and closed about 1985 Premier Operating owned the Main West.

Seating:

Cinema 1 204 seats

Cinema 2 252 seats

Total 456 seats

Mohawk Drive-In **CLOSED**

Opened about 1954 and closed about 1955 Inter-City Drive-In owned this drive-in, which had space for 751 cars.

Mountain **CLOSED**

526 Concession

Opened about 1945 and closed about 1970 F. Goldhar and W. Gordon owned the Mountain, which had 709 seats.



Movie Palace **OPEN**

AKA: Mountain, York, Lyceum

526 Concession

www.themoviepalace.com

2004-

710 seats

Odeon **CLOSED**

156 King East

Opened 1973 and closed 1991 Odeon owned this twin theatre.

Seating:

Cinema 1 659 seats

Cinema 2 538 seats

Total 1197 seats

Palace **CLOSED**

137 King East

Opened about 1935 and closed about 1970 Famous Players and in 1946 Odeon owned the Palace, which had 2007 seats.



Pantages **CLOSED**

Opened and closed about 1935



Playhouse **CLOSED**

177 Sherman

Opened about 1935 and closed about 1985 A. Patzalek and in about 1980 530310 Ontario Inc. owned the Playhouse, which had 666 seats.

Princess **CLOSED**

aka: Wonderland, Colonial, Tivoli

1913-? 1925

Pussycat **CLOSED ADULT**

AKA: International Cinema, Broadway

251 King William

Renamed from International Cinema about 1975 and renamed Broadway about 1979 Hamilton International Cinema owned the Pussycat, which had 666 seats and shown porno movies.



Queen's **CLOSED**

1065 Barton East

Opened about 1935 and closed about 1955 Mc Kean Theatres owned the Queen's, which had 937 seats.

Regent **CLOSED**

150 Locke

Opened about 1935 and closed about 1955 United Amusements (FP) owned the Regent, which had 618 seats.

Reo **CLOSED**

170 Parkdale

Opened about 1935 and closed about 1985 Better Theatres Limited owned the Reo, which had 555 seats.

Rex **CLOSED**

?

Opened about 1969 and closed about 1970 Michael Papedakis owned the Rex, which had 484 seats.

Roxy **CLOSED**

?

Opened about 1955 and closed about 1955 National Theatres Services owned the Roxy, which had 750 seats.

Royal **CLOSED**

95 King West

Opened about 1935 and closed about 1945 The Royal had 428 seats.



Savoy **CLOSED**

24 Merrick

Opened 1907 and closed about 1955 Odeon owned the Savoy, which had 977 seats.



Staircase Café **OPEN**

27 Dundurn St.

2004-

www.staircase.org



State **CLOSED**

758 Barton East
Opened about 1949 and closed about 1965 M. Wiwchar owned the State, which had 558 seats.

Strand **CLOSED**

761 King East
Opened about 1930 and closed about 1970 United Amusements (FP) owned the State, which had 558 seats.



Tivoli **CLOSED**

aka: Wonderland, Colonial, Princess
110 James West Opened about 1925 and closed 1989 Famous Players owned the Tivoli, which had 1164 seats, on June 29, 2004 a wall of this theatre caved in.



Towne **CLOSED**

760 Barton
Opened about 1979 and closed about 1980
Odeon owned this theatre

Upper James Cinemas

CLOSED

1405 Upper James
1995-December 18th, 2008
Cineplex Odeon owns this theatre, In August 2001 the projection booth was vandalized forcing it to close down for a few days

Seating:
Cinema 1 257 seats
Cinema 2 292 seats
Cinema 3 189 seats
Cinema 4 189 seats
Cinema 5 189 seats
Cinema 6 240 seats
Cinema 7 228 seats
Total 1584 seats



Westdale **OPEN**

1074 King St. W.
Opened about 1940 L. Rosefield and in 1980 CEC Holdings and in later years Ontario Theatres Group owned the Westdale, which had 593 seats and it now shows art films.



Windsor **CLOSED**

16 Kenilworth
Opened about 1945 and closed about 1955 Mrs J. Ford (Odeon) owned the Windsor, which had 536 seats.

Wonderland **CLOSED**

aka: Colonial, Princess, Tivoli
110 James West
? 1908-1909

York **CLOSED**

164 York
Opened about 1945 and closed about 1985 Mrs J. Ford (Odeon) and in about 1980 CEC Holdings owned the York, which had 448 seats.

54 listings
Last update: 2008-11-08

Hamilton movie theatres by Mike Rivest
www.movie-theatre.org